



投资3亿元打造的华缘新材料股份有限公司新厂区，项目总占地7万平方米。引进国内、国际最先进的SMC材料生产线各一条，材料捏合机15台，4500T、2000T大型液压设备及配套生产设备、研发设备共150余台（套），将于2018年实现产能四万吨4L复合新材料的宏伟目标。

Invested 300 million in the new manufacturing zone of Huayuan New Materials Co.,Ltd. The project covers more than 70,000m<sup>2</sup>. The company will introduce two most advanced SMC producing lines from inland and abroad each, and over 150 sets of equipment ranging from raw material Kneading machine, 4500T、2000T pressing machine and many more. By the year of 2018, the total annual output of composite material can reach 40,000 tons.

## 新的诗篇

2016年5月17日，宁波华缘玻璃钢电器制造有限公司股东大会通过决议：决定以2015年12月30日为基准日，将宁波华缘玻璃钢电器制造有限公司整体变更为股份有限公司

2016年6月2日，股份有限公司正式进行了工商登记，并更名为：

**华缘新材料股份有限公司**

In May 17, 2016, By resolution of the general meeting of shareholders:

Decided to December 30, 2015 as the base,

the Ningbo Huayuan FRP Electrical Appliance Manufacturing Co. Ltd.

The overall change was Limited by Share Ltd

In June 2, 2016, Limited by Share Ltd formally registered with the industry and commerce, and changed its name to:

**HUAYUAN NEW MATERIALS CO.,LTD**



## 营销网络 产业联动 共谋发展

Industry Linkage, Resource Sharing

### 客户资源

#### MARKETING NETWORK AND WORLD CLIENTS

网罗不同行业背景的技术精英和销售专才，为客户提供一站式的销售服务与周到完善的售后体验。打造日益完善的驻外服务机构，进一步开拓市场，延伸服务，为客户提供更方便、快捷、强大的产品和技术支持。

Huayuan company provides one-stop service and great after-sales experience for clients with elite sales and technicians team. The company continuously improving national service agencies, try to extend its market and service, and provide world clients with more convenient, efficient and strong service.

### 全球客户

#### Foreign Clients

英国、法国、德国、美国、加拿大、沙特、迪拜、塞尔维亚、韩国、俄罗斯、斯里兰卡、印度、越南、马来西亚  
UK, France, Germany, USA, Canada, Saudi Arabia, Dubai, Serbia, Korea, Russia, Srilanka, India, Vietnam, Malaysia  
北京、上海、浙江、广东、福建、河北、河南、湖北、湖南、安徽、吉林、江苏、辽宁、山东、陕西、四川、重庆、黑龙江  
Beijing, Shanghai, Zhejiang, Guangdong, Fujian, Hebei, Henan, Hubei, Hunan, Anhui, Jilin, Jiangsu, Liaoning, Shandong, Shanxi, Sichuan, Chongqing, Heilongjiang

### 驻外机构

#### National Agencies

上海、重庆、广州、成都、深圳  
Shanghai, Chongqing, Guangzhou, Chengdu, Shenzhen



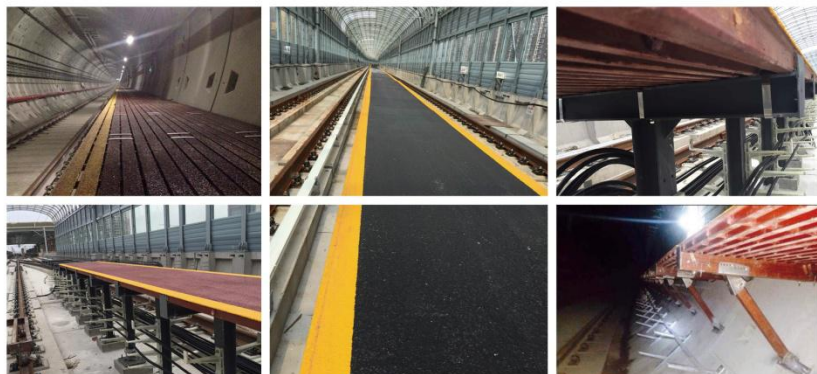
## 战略合作伙伴

将优秀保持成一种习惯，与优秀的人为伍，做行业的领头人。

华缘新材料拥有诸多世界五百强企业的大客户及合作伙伴，所生产的电力电器产品及复合材料箱体受到国内外客户的一致好评。同时，企业还积极开拓新的产品领域，所研发和生产的地铁疏散平台、电线电缆支架等产品被广泛应用于沿海发达城市的市政项目中，同时稳步推进同国际大都市的市政建设应用项目洽谈，积极将公司的产品推向国际高端市场。

Huayuan Company has many World's Top 500 clients and partners. Its electric appliance products have received wide praise from the clients both in the country and abroad. The company actively persists in the development of new products. Its SMC emergency escape walking way, metro cable slot, cable brackets are widely applied in brackets and many other products are widely applied in civil projects of big seaside cities. Its also progressed in the deals of some urban construction in big international cities, to build the company reputation in the global market.

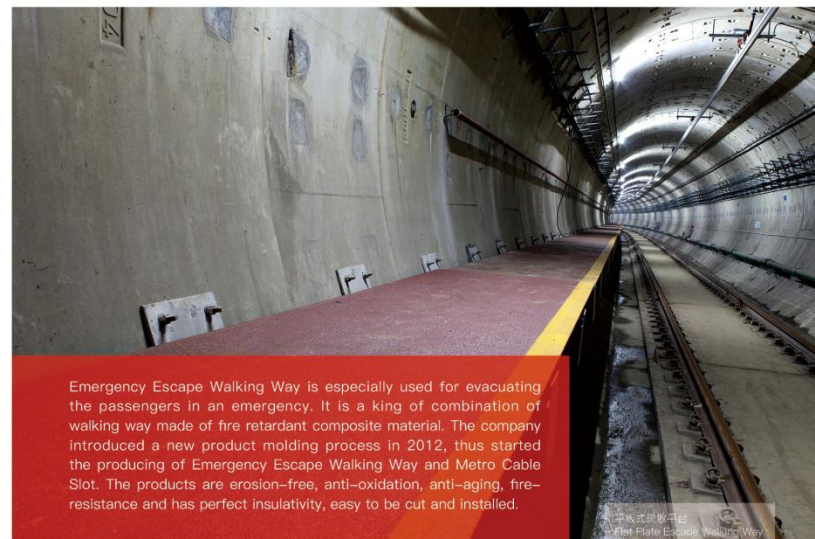




## 疏散平台 Emergency Escape Walking Way

地铁疏散平台是地铁运营列车在隧道内出现紧急情况时，疏散乘客的专用通道。本品属于防火复合材料制造的组合式安全疏散平台。2012年，公司引入新的产品成型工艺，开始投产地铁疏散平台和电缆线槽盒。复合材料地铁疏散平台具有广泛的耐腐蚀性，耐老化、寿命长，阻燃、绝缘性能好，且轻质高强，便于切割、安装。

华缘开发的SMC电缆支架和由拉挤成型的高强度复合材料地铁检修（疏散）平台的组合，将给国内地铁的建设提供全新的设计施工理念，并将大大节省日常的维护工作。



Emergency Escape Walking Way is especially used for evacuating the passengers in an emergency. It is a kind of combination of walking way made of fire retardant composite material. The company introduced a new product molding process in 2012, thus started the producing of Emergency Escape Walking Way and Metro Cable Slot. The products are erosion-free, anti-oxidation, anti-aging, fire-resistance and has perfect insulativity, easy to be cut and installed.

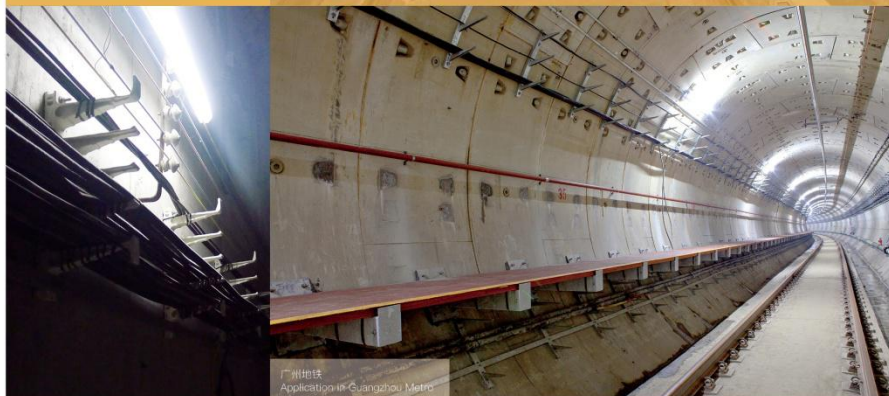
The combination of SMC cable bracks and emergency escape walking way can largely reduce the maintenance cost of the subway operation, and provides a brand new design and construction concept for this industry.





## 复合材料电缆支架 Composite Material Cable Bracket

SMC 复合材料电缆支架产品获得国家重点新产品的荣誉。公司生产的复合材料电缆支架被应用于宁波、杭州、广州、上海、成都、重庆等地铁建设中。  
Huayuan's SMC Cable Bracket won the honor as the National Key New Products. The products are widely used in the subway construction of cities like Ningbo, Hangzhou, Guangzhou, Chengdu, Chongqing and so on.



广州地铁  
Application in Guangzhou Metro

## 复合材料电缆支架

### Composite Material Cable Bracket

SMC 玻璃钢复合材料电缆支架可以广泛应用于电缆沟、电缆隧道、电缆排管工作井以及电缆半层内的电力电缆、控制电缆和通信电缆的铺设。采用 SMC 复合材料制造的电缆支架具有强度高、韧性好、耐腐蚀、绝缘性能搞、阻燃性好、不易老化、使用寿命长的优点，具有良好的市场应用前景。

SMC cable brackets are widely used in cable trench, cable tunnel, rack pipe well, and used as layers for electrical cable, control cable and communication cable. The advantages for SMC cable brackets are high strength, good flexibility, corrosion resistance, good performance of insulating, fire resistance, aging resistance and long service life, so the market situation for composite material cable brackets is good.



## 复合材料电缆支架的优点

### Strength of Composite Material Cable Bracket

- ★ 强度高、重量轻，重量只有钢的 1/4，混凝土管的 1/10 左右，运输方便，施工简捷；
- ★ 产品表面光滑，摩擦系数小，不损伤电缆；
- ★ 体绝缘性强，无电腐蚀，可防止产生涡流，无需接地，减少安装工作量；
- ★ 耐水性好，可以长期在潮湿环境或水中使用；
- ★ 耐热、耐寒，防火性能优，能在 -50℃ 至 -130℃ 下使用；
- ★ 防腐蚀，不生锈，使用寿命长，免维护。

★ The SMC cable bracket features its high strength, good flexibility, corrosion resistance, good performance of insulation, fire resistance, aging resistance and long service life, which leads to vast application.



改造前 Before Renovation

改造后 After Renovation



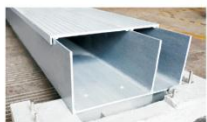
## 复合材料电缆槽 Composite Cable Tray

2013 年，华缘集团与宁波市轨道交通集团有限公司共同开发生产复合材料电缆槽盒。该产品通过机械工业电工材料产品质量监督检测中心、中国兵器工业金属材料理化检测中心、国家防火建筑建材质量监督检测中心的检测，各项性能检测结果均优于行业技术指标。目前，该产品已经应用于宁波轨道交通和杭州地铁项目建设，并与上海、杭州、广州、苏州、武汉、南京等城市的地铁建设项目达成了合作意向。该产品荣获了宁波市重点工业新产品三等奖，并已申报发明专利。

In 2013, Huayuan and Ningbo Urban Rail Transit Group co-developed the composite material cable tray. The products passed the tests by Mechanical Industrial Electrician Materials Product Quality Supervision and Inspection Center, China Ordnance Industry Metal Materials Physical and Chemical Testing Center, National Fireproof Construction Material Quality Supervision and Inspection Center. The performance test results are better than the industry technology index. At present, the products have been applied in Ningbo rail transit and the Hangzhou subway project construction, and reached a cooperation agreement with Shanghai, Hangzhou, Guangzhou, Suzhou, Wuhan, Nanjing and other cities in the subway construction project. The product won the third place of Key Industrial New Products of Ningbo City, and has been applied for patent for invention.



海南西环高铁  
Application in Hainan Xihuan High-speed Rail



电缆槽结构  
Cable Trough Structure



金甬铁路  
Application in Jinhui High-speed Rail

## 复合材料电缆线槽的优点

### Advantage of Composite Material Cable Tray

- ★ 良好的耐候性能，能适应 -50℃至 60℃温度范围内的工作，能适应北方寒冷及南方酷热的工作环境；  
Weather resistance, adapted to working temperature range from -50℃ to 60℃, can be applied in extremely cold and hot weather in north and south.
- ★ 具有良好的耐化学腐蚀和耐老化性能，能耐环境中的酸性及盐液等废水和有害物质的侵蚀，以及雨水、地热和其他辐射物质的影响；  
Good resistance to chemical corrosion and aging problem; can prevent from the erosion of acid and salty water, rain water, geothermal and other radioactive materials.
- ★ 具有良好的阻燃性能，达到 GB8624-2012《建筑材料燃烧性能分机方法》标准中的难燃级 B 级水平；  
With good fire retardant ability, the inflammable level reaches standard Level B in GB8624-2012 The Extension Method for Burning Behavior of Building Materials.
- ★ 优异的密封性能，通过产品设计，完全实现产品密封，有效防止灰尘进入；  
Excellent sealing property, can effectively prevent dust from entering the cable tray.
- ★ 机械强度高，重量轻（仅为水泥电缆槽的十分之一）；  
High mechanical strength, light weight (Its weight is only 10% of the cement tray).
- ★ 突出的耐弯曲疲劳性能，化学性能稳定，可设计，易成型。  
Excellent bending fatigue performance, stable chemical property, easy to be design and molded.



## 信号箱体 Signal Box

防盗型复合材料室外信号箱使用 SMC 复合材料，采用全密封技术，可以防止灰尘、雨水进入箱盒内，减少灰尘、雨水、潮气对设备的影响，从而大大降低了维护的工作量。防盗型复合材料室外信号箱采用特制的蜗轮蜗杆结构的防盗锁，有效地提高了设备的安全性。高铁轨道用的信号箱体已经成功应用在宁波高铁、青荣高铁，并和北京、上海、杭州、武汉等铁路局建立了长期合作伙伴关系。



Composite material theftproof signal boxes are made of SMC, and adopted whole sealing technology in order to prevent dust and rain from entering the boxes, as well as to reduce the affects to the devices caused by dust, rain and damp, that reduces the workload for maintaining. The locks use special worm and gear structure, which increases the safety of the device. The railway signal boxes produced by Huayuan have just been applied in Hangzhou-Nanjing and Tsingtao-Rongcheng High-speed Rail. The company has also built business relationship with the Railway Administrations of cities like Beijing, Shanghai, Hangzhou, Wuhan in the long run.



可根据用户要求提供高、中、低三种屏蔽规格产品，并有万科端子、磁端子两种规格供用户选择。

We provide signal boxes with high, medium, low grades of shielding separately, and we also provide Vanke terminals and porcelain terminals for choice.

## 道岔部件 Railway Turnout Parts

道岔是一种使机车车辆从一股道转入另一股道的线路连接设备，也是轨道的薄弱环节之一，通常在车站、编组站大量铺设。有了道岔，可以充分发挥线路的通过能力。SMC 复合材料生产的道岔部件具有强度高、韧性好、耐腐蚀、绝缘性能搞、阻燃性好、不易老化、使用寿命长的优点。



Turnout is a vehicle from one track to another track line connecting device, one of which is also a weak link of the track, usually in the station, large laying in marshalling station. With turnout, the capacity of the circuit can be brought into full play. The turnout parts made of SMC composite material have the advantages of high strength, good toughness, corrosion resistance, insulation property, good flame retardancy, aging resistance and long service life.



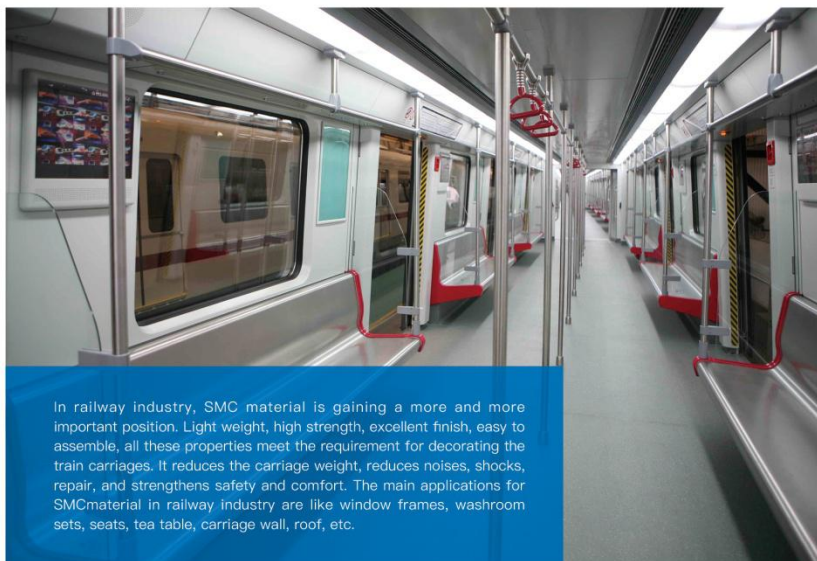
道岔免维护系列部件  
Railway Maintenance-free Components



## 机车内饰 Interior Trim in the Train

在轨道交通领域，SMC 复合材料正成为越来越重要的一类材料。满足车厢内饰美观舒适以及轻量化要求，SMC 复合材料具有轻质高强、造型和装饰效果好，生产方便快捷、表面质量佳的技术特点。对减轻车厢质量，降噪减振，提高安全性和舒适性，减少维修等均有重要作用。

SMC 复合材料在轨道交通的主要应用包括：铁路车辆窗框、卫生间组件、座椅、茶几台面、车厢壁板与顶板等。



In railway industry, SMC material is gaining a more and more important position. Light weight, high strength, excellent finish, easy to assemble, all these properties meet the requirement for decorating the train carriages. It reduces the carriage weight, reduces noises, shocks, repair, and strengthens safety and comfort. The main applications for SMC material in railway industry are like window frames, washroom sets, seats, tea table, carriage wall, roof, etc.



## 电力电气产品 ELECTRICAL APPLIANCE PRODUCTS

电力电气产品是公司生产经营的传统主业。该产品是中低压空气断路器、真空断路器以及接触器等产品的核心结构件和绝缘件。产品供给全球最顶尖的断路器生产商比如施耐德、西门子、通用电气等客户。

The electrical appliance products are Huayuan Group's traditional business. They are major components or insulating parts of products like Low Voltage Air Circuit Breaker, Vacuum Circuit Breaker, Contactor and so on. These electrical appliance products are mainly provided to the World Top Breaker Supplier, such as Schneider, Siemens, GE and many others.

### 开关壳体 SWITCHGEAR HOUSING



### 开关配件 ACCESSORIES OF SWITCHGEAR



### 各种电器零部件 PARTS FOR ELECTRICAL APPLIANCE



## 电力电气产品 ELECTRICAL APPLIANCE PRODUCTS

### 绝缘子 INSULATOR



### 绝缘护罩 INSULATING COVER



### 面弧罩 ARC CHUTE





## 电力电气产品 ELECTRICAL APPLIANCE PRODUCTS

### 户外电力箱

#### Electrical Connecting Box for Outdoor Use

密封性能良好，能有效保护壳内电器部件的安全使用。分线盒上超前的锁具设计，能防止破坏及被盗，抗老化、耐腐蚀，客体的使用寿命可达 30 年以上。产品长期供应给国家电网、南方电网，以及全国各地的电力局和全球不同客户。

Good performance of sealing, which makes sure the electrical accessories safely used. Proactive design of the lock system prevents from destroying and stealing. Anti-aging, anti-erosive, the service life is over 30 years. The products are supplied to State Grid Corporation of China, China Southern Power Grid and many other famed companies in power industry.



## 电力电气产品 ELECTRICAL APPLIANCE PRODUCTS

### 电度表箱

#### Electrical Meter Box

电度表箱采用新型复合材料 SMC( 不饱和聚酯玻璃纤维增强片状模塑料 )，表面光洁，外形美观，不易腐蚀，适用于户内外的各种恶劣环境。且绝缘、阻燃性能好，能防止电器火灾事故的发生。

Electrical meter box with glamorous surface, good appearance made of composite new material SMC (Molding compound made of unsaturated resin reinforced by fiberglass) is applicable to various bad environment no matter indoors or outdoors, for it is anti-erosive. With good performance of insulating properties and fire resistance, it can prevent electrical equipment from catching fire.





### 光缆交接箱

箱体采用新型 SMC 材料压制而成，能抵抗各种环境与气候条件的影响和化学侵蚀，使用寿命在 30 年以上。

箱体有内外气流通道，可调节箱体内部的空气温度、防水汽凝结功能。

箱体采用组合式设计，以及高性能密封件，整个箱体具备较高的密封性能，能有效防雨、防尘、防虫害。保护性能达到 GB4208-IP65 要求。

箱体采用三点式门锁，锁芯分为 A、B、C、D 四种，特别加工，安全可靠，能满足不同用户的需求。

箱体尺寸合理，内部空间宽敞，双面箱体进出线数可达 36 根以上。



### Optical Connecting Box

it is made from New-style compound SMC. The frame is attributed with excellent performance of anti-erosion and anti-aging. Its life is more than 30 years.

The frame with inner and outside convection passage has function of against vapor coagulation.

The rabbet-joint structure and auxiliary air-proof parts are applied on the board of the box door, so the frame is with good airproof performance to defend against rain, dust and worm. And The security level reaches the requirements of GB4208-IP65 class.

The securith is guaranteed by the measures of three-point orientation lock on the frame and door, it is safe and reliable.

The parts is rational in size, inside space is commodious.

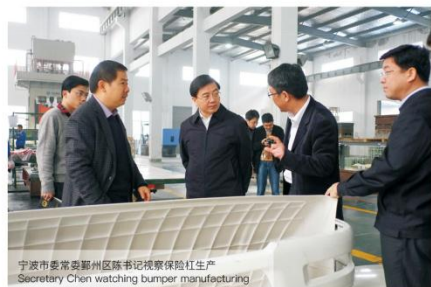




## 汽车配件 AUTOMOBILE PARTS

SMC 模压玻璃钢汽车配件具有: 轻质高强, 表面光洁, 耐高温耐腐蚀, 弹性模量高, 抗冲击, 可塑性强, 表面效果良好等优点。可根据您的要求开发定做及定点配套。产品开发周期短, 易成形, 适用于各种型号汽车。

SMC molding Auto Parts have the following advantages: light weight, high-strength, smooth surface, heat resistance, corrosion resistance, high elastic modulus, impact resistance, high plasticity. We can develop in accordance with your requirements, Short development cycle and easy production process make SMC material suitable for marking various auto parts.



## 城市建设 CITY CONSTRUCTION

因其优异的产品特性, 复合材料拥有十分广泛的应用领域。华缘生产的盲道板、窨井盖等产品因质量可靠、价格合理, 已出口到加拿大、意大利、澳大利亚等国, 用于当地的市政建设中。

Due to the excellent products performance, the composite material has very broad market. The blind pavement and manhole cover produced by Huayuan have been exported to countries like Canada, Italy, Australia for their good quality and reasonable price.



盲道瓦板 Blind Pavement

